

Proposed Building Renovation



South Bethany Police





5 Major Areas of Risk

By Dr. Warren

1. Chain of Custody
2. Ensuring the Safety of Everyone, both Internal & External
3. The Right to Privacy
4. Keep Prisoners from Escaping
5. Weapons Safety



Chain of Custody

- Evidence chain of custody has already been improved upon by separating the evidence and processing room.
- Evidence room was relocated to the old interview room/office leaving the processing room to be used solely for the processing of prisoners.
- Evidence room access is now restricted solely to Officers and not exposed to prisoners thus maintaining a proper chain of custody



Ensuring the Safety of Everyone, both Internal & External

- ▶ Processing room improvements has created a much safer environment for the Prisoners and the Officers processing them.
- ▶ Removal of Evidence equipment and addition of new detention bench in processing room has allowed for a more effective use of space and improved safety of processing.
- ▶ Reception area still requires improvements that can be phased in at a later date with grant funding, improvements required involves target hardening and requires ballistic paneling and glass.

The Right to Privacy

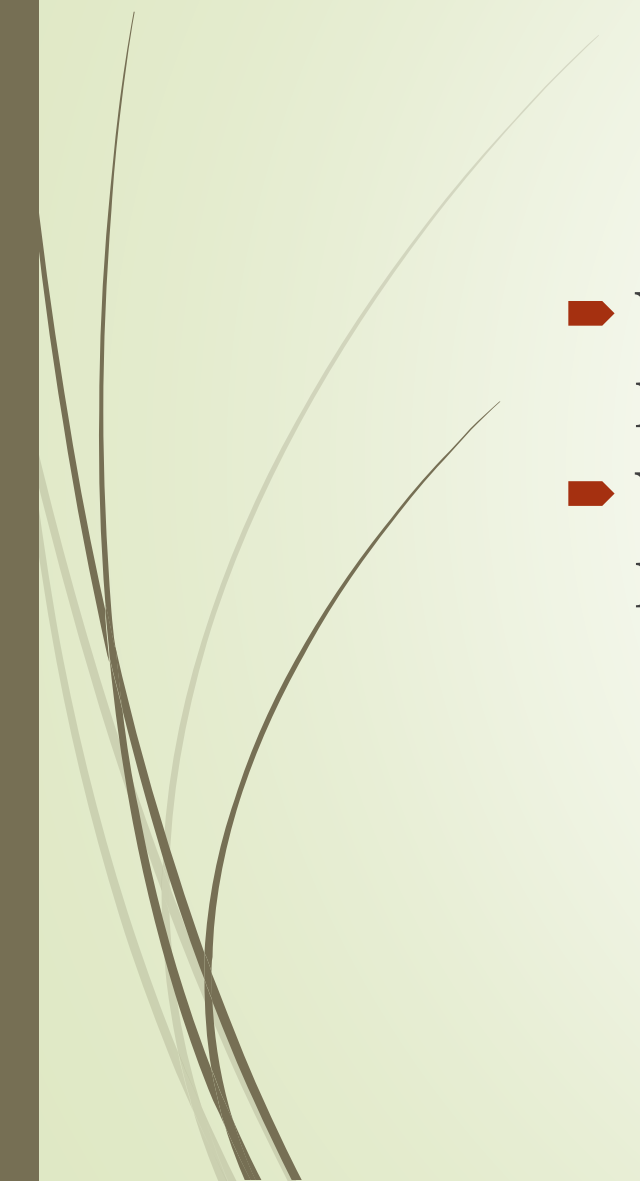
- Proposed relocation of Dispatchers office and window will cut down the visibility of people located inside the building (Witnesses, Victims, Prisoners, Visitors).
- Dispatcher relocation will improve right to privacy of people in the Police Department.
- Addition of new detention bench in processing room allows for two locations to secure prisoners (one for juveniles and the other for adults). When dual arrests are made, sight and sound separation is required between adults and juveniles. It is also important for male and female prisoners to be separated as well. This separation assists in ensuring juveniles right to privacy and addresses safety concerns as well.
- Sight and sound separation – while the above solves sight separation it is a still a challenge for sound given the proximity but with closed door processing room it should still be considered an improvement in regards to the right to privacy.

Keep Prisoners from Escaping

- Prisoner retention ability has vastly improved in processing room.
- Separating from evidence room as a stand alone processing room has created a more effective use of space and reduced the risk of escape.
- Processing room will contain all items required to process without leaving room (bathroom only exception). Room is key card entry and contains no windows the only exit would be past the Officer processing them thus limiting the risk of escape.



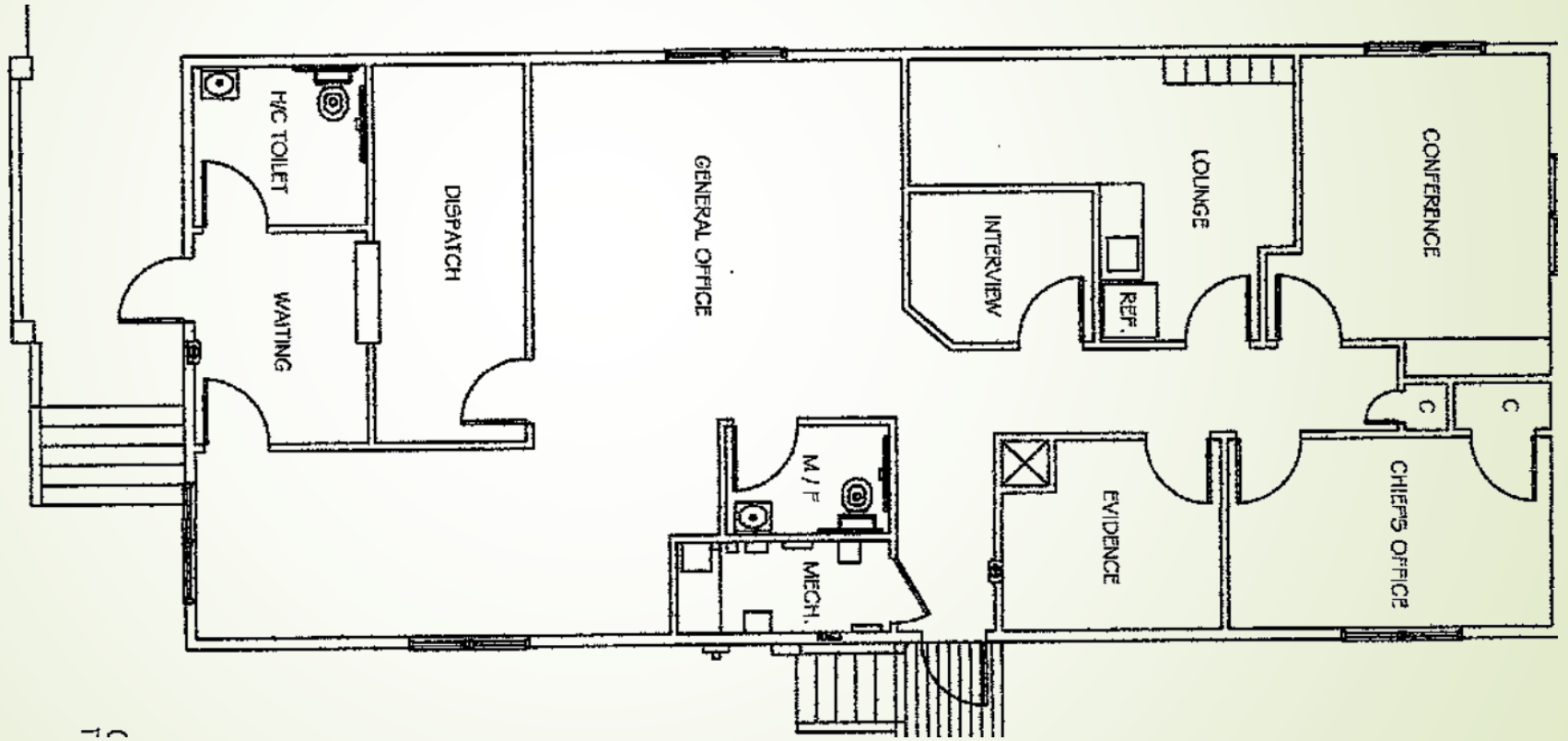
Weapons Safety

- Weapon safety can improve with building renovation and proposed armory.
 - Weapon safety also adhered to by Officers during prisoner processing by securing weapon prior to processing prisoners.
- 

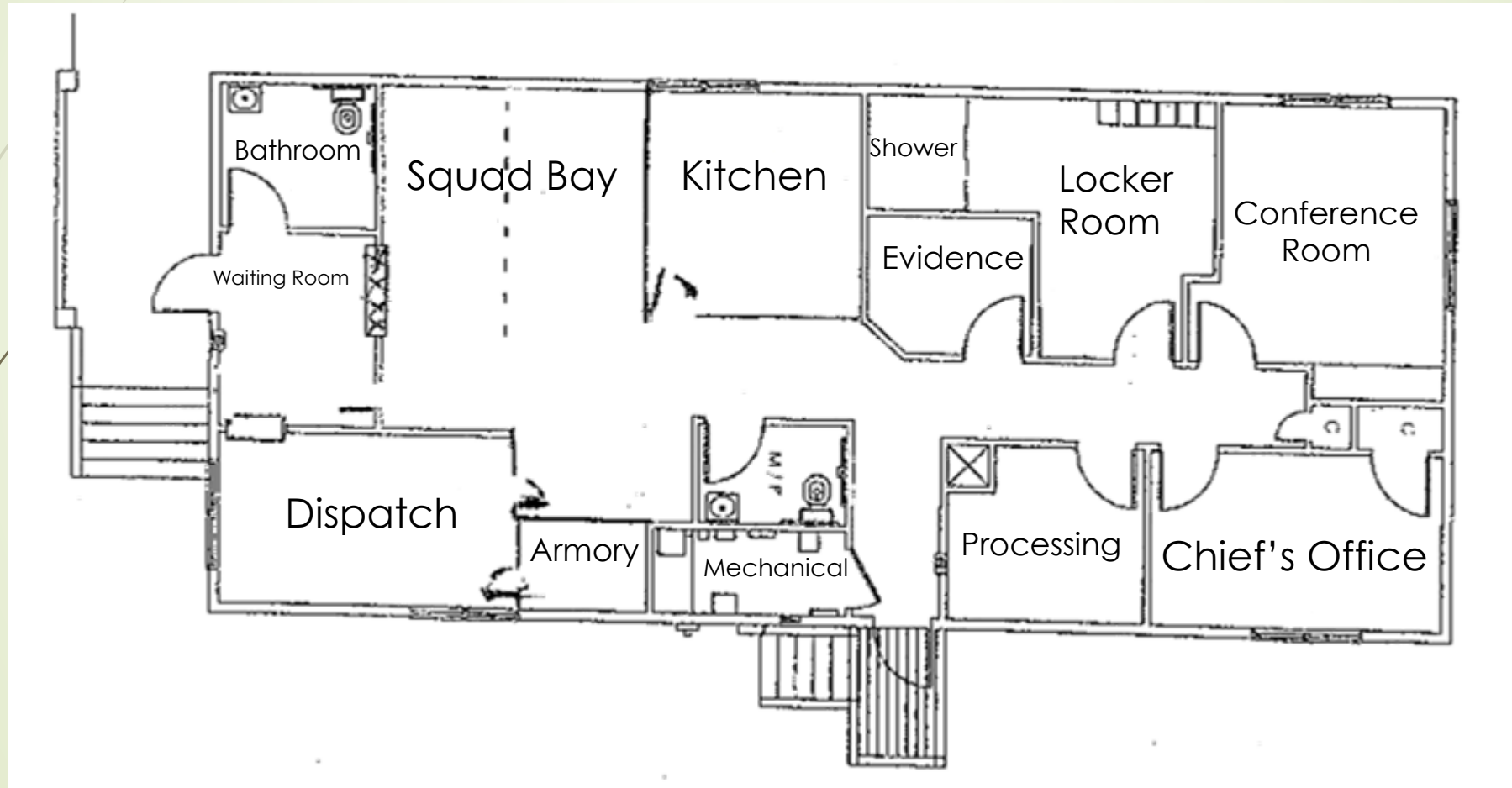
National Accreditation Standards Recommendations

- Cpl. Burns reviewed the minimum items that should be addressed to avoid civil liability:
 1. **Evidence** needs to be secured in a separate room separate & away from where prisoners are processed and the room needs to be utilized only for maintaining the integrity of the chain of custody.
 2. There should be a separate **Toilet Facility for Detainees** without a lock on the door.
 3. There should be a **Detainee Holding Area** that is not in close proximity to the desks where officers doing a warrant are in reaching, spitting and kicking distance.
 4. There needs to be a **Second Detainee Bench** so when there are multiple detainees, they can be separated.
 - Juveniles must be sight and sound separate from adult prisoners.
 - Males and females must be at least sight separate from one another.

Current Floor Plan



Proposed Renovation



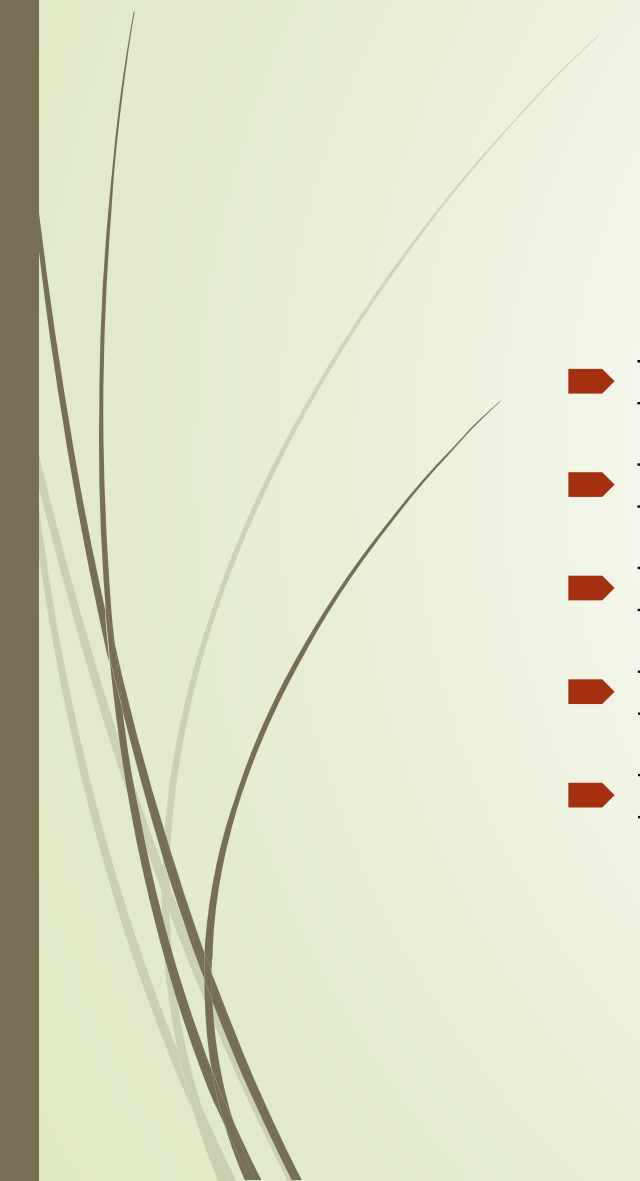


Multipurpose Room Renovations

- Eliminate multipurpose room like has been done for the evidence and processing room to create an efficient use of space.
- Kitchen to be removed from locker room and placed in squad bay (dimensions of kitchen close to what was proposed in addition proposal).
- Remove wall to Dispatcher office to offset Squad bay space (three feet of squad bay will be lost with kitchen renovation).
- Relocate Dispatcher office.
- Armory to be removed from locker room and relocated.
- Locker room (with relocation of kitchen and armory) will be able to accommodate the addition of a small shower.



Goals and Objectives for the Building Solution

- Improve safety of all departmental personnel
 - Improve visitor/guest safety
 - Eliminate multipurpose use of rooms
 - Provide space necessary for all law enforcement operations
 - Reduce liability
- 



Grants and Donated funds

- Roughly \$15,000 from Sussex County Grant funding has been spent thus far towards making improvements to building.
- Improvements were directed at separation of Processing and Evidence room.
- Costs associated with this separation included relocation of cameras, additional key card access points, addition of commercial exhaust fan (evidence room), Computer server to keycard system.
- Additional Grant funding of approximately \$5,000 was obtained to procure needed equipment for these rooms and included a detention bench and evidence lockers to upgrade and replace old equipment.
- \$50,000 from Anna Panco Donated funds still available to be applied towards proposed building renovation.



Cost estimate for renovations

- Project Cost estimate subject to bid.
- Initial consultation with a licensed Contractor had cost between \$60,000 - \$80,000 and includes renovations described in this presentation.
- Exact cost from consultant is available to Council but not included here due to potential bidding on project.